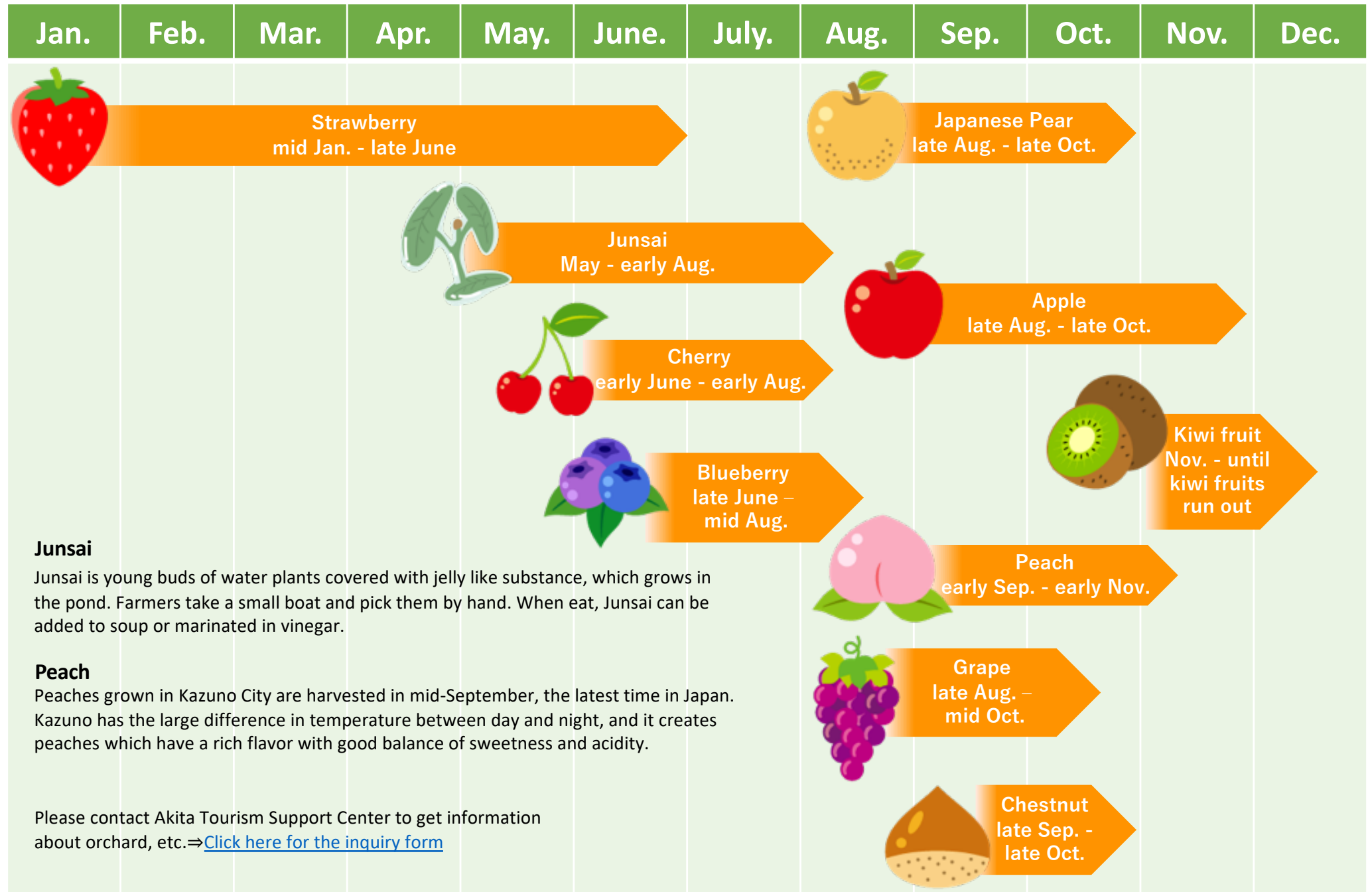


Harvest Calender

Akita tourism support center



Junsai

Junsai is young buds of water plants covered with jelly like substance, which grows in the pond. Farmers take a small boat and pick them by hand. When eat, Junsai can be added to soup or marinated in vinegar.

Peach

Peaches grown in Kazuno City are harvested in mid-September, the latest time in Japan. Kazuno has the large difference in temperature between day and night, and it creates peaches which have a rich flavor with good balance of sweetness and acidity.

Please contact Akita Tourism Support Center to get information about orchard, etc.⇒[Click here for the inquiry form](#)