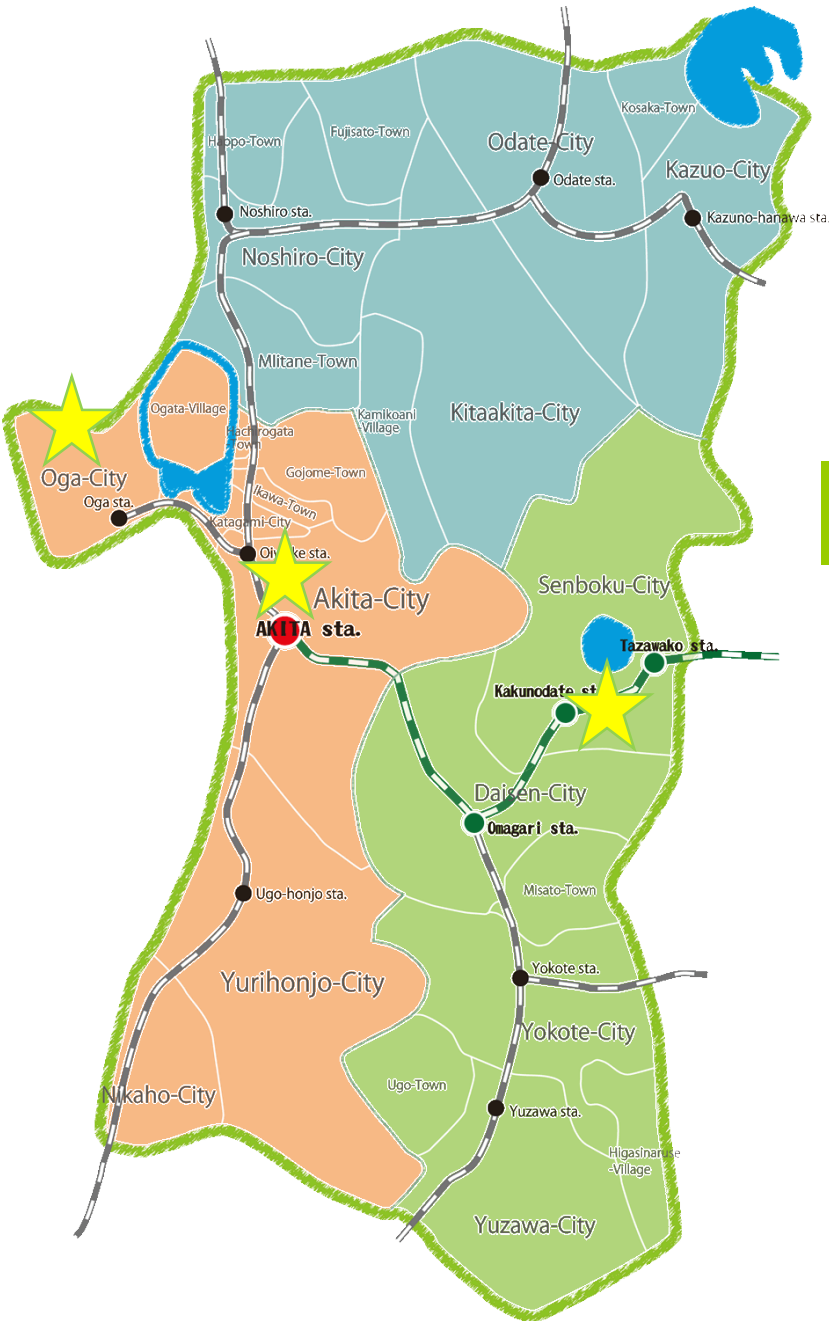
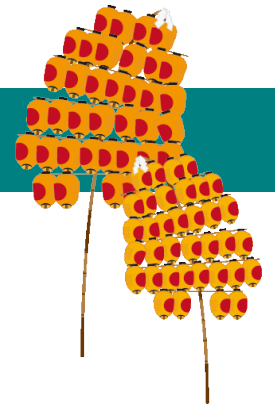


Recommended tour routes for Accessibility



★ Akita-City

- [Akita-city downtown Working Course](#)



★ Oga-City



- [Oga Peninsula and Hot Spring Accommodation Touring Route](#)
- [Oga Peninsula Touring Route](#)

★ Senboku-City

- [Kakunodate Bukeyashiki Samurai Residences Walking Course](#)



Akita City Downtown Walking Course



Akita Station

550m
Walk
7min

Many sightseeing spots gather around Akita Station. You can fully enjoy art, event, history and tradition of Akita.

Senshu Park



550m
Walk
7min

Senshu Park is flower viewing spot where variety of beautiful flowers bloom each season. Enjoy viewing cherry blossom and Azalea in spring, Iris in summer, and bright red and yellow leaves in autumn.



Area Nakaichi · Akita Museum of Art



750m
Walk
10min

Area Nakaichi is a popular tourist spot including Akita Museum of Art displays "The Event of Akita" by Tsuguharu Foujita. There are also restaurants which provide local dishes of Akita, and various events are also held. Enjoy the seasonal landscape of Senshu Park from museum lobby.



📍 4-7-35 Nakadori, Akita City
🕒 10am-6pm
☎ 018-853-8686

Folklore and Performing Art Center



1.5km
Bus
10min



The Center displays folklore events within Akita City such as Kanto Festival which represents Summer festival of Akita Prefecture, Tshuchizaki Shinmeisha Shrine Annual Celebration and Float Festival which designated to UNESCO intangible cultural heritage, etc. Let's try the Kanto performance of Kanto Festival in the exhibition hall. Demonstration is given by performers on Saturdays, Sundays, and Holidays from April to October.

📍 1-3-30 Omachi, Akita City
🕒 9:30am-4:30pm
☎ 018-866-7091



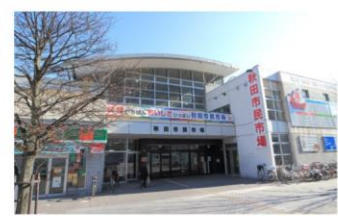
Akita Citizen's Market



550m
Walk
7min

There are anything you want such as seafood, meat, various vegetables, fruits, pickles, souvenirs of Akita, and convenience goods, etc. Why don't you find local foods here.

📍 4-7-35 Nakadori, Akita City
🕒 5am-6pm Closed on Sundays
☎ 018-833-1855



Akita Station

Oga Peninsula Hot Spring Accommodation Touring Route

The Oga Peninsula which juts in the Japan Sea has lots of tourist spots and the 3 necessary draws for tourists; ocean, mountains and hot springs. The evening sun setting into the Japan Sea is also a wonderful view.



Depart from Akita Station

27.7km
About
40 mins
by car

Oga Tourist Information Center

20.8km
About
25 mins
by car



This information center is located on the gateway into the Oga Peninsula and has a giant 15m Namahage statue to greet you. It has a large carpark and a café area where you can take a break while looking out at Mt. Kanpu.

📍 207-219 Ikko, Funakoshi, Oga 🕒 9 : 00am-6 : 00pm
☎ 0185-35-5300

Namahage Museum & Oga Shinzan Folklore Museum

6.7km
About
10 mins
by car



This is a museum where Namahage masks from various districts around Oga are on display. You can experience a Namahage event in the adjoining Shinzan Folklore Museum that is a tradition passed down the generations in the Shinzan district.

📍 Mizukuisawa, Shinzan, Kitaura, Oga
🕒 9 : 00am-5 : 00pm
☎ 0187-55-1496

Oga Hot Spring Village

7.5km
About
10 mins
by car

This is a hot spring area that was loved by the Satake clan who were feudal lords in Akita and popular as a therapeutic hot spring in the Taisho era. This spring is known for being slightly salty and for people not getting cold easily after a bath. We recommend this spring to female bathers due to its temperature-retaining effect and it being good for making your skin beautiful.

Nyudodosaki

10.3km
About
13 mins
by car

Nyudodosaki is a picturesque sunset spot located at 40 degrees north latitude. The impressive black and white striped lighthouse was selected in the top 50 lighthouses in Japan and there are a number of restaurants here to enjoy fresh seafood and local specialty dishes cooked on hot stones.



There are general toilets inside the shops and restaurants. Please use the public toilets here if you require a toilet for wheelchair users.



Nyudodosaki Enchi Public Toilets

Oga Aquarium GAO

Via the west
coastal road
65km
About
1 hr 30 mins
by car



There are 10,000 living creatures from 400 different species on display here including many kinds of fish, penguins, seals and sea lions outside the main tank. There are around 2000 different species swimming in the main tank which contains around 800t of water. There is also the Hatahata display which is an area for breeding fish from Akita Prefecture.

📍 Shiohama, Toga, Oga
🕒 9 : 00am-5 : 00pm (※Winter period: 9:30am-4:30pm)
☎ 0185-32-2221

Arrive at Akita Station

Wheelchair Rental Information



In addition to this information center, it is possible to rent or return wheelchairs from and to Oga Station Square Tourist Information Center, Oga Futto Tourist Information Center or Oga Onsen Koryu Kaikan Gofu. These 4 places are marked by ★ on the map.



From 8:30 at night, come and watch a Namahage taiko drum performance at Oga Onsen Koryukan Gofu.

Oga Peninsula Touring Route

The Oga Peninsula which juts in the Japan Sea has lots of tourist spots and the 3 necessary draws for tourists; ocean, mountains and hot springs. The evening sun setting into the Japan Sea is also a wonderful view.



Nyudasaki

Oga Onsen Koryu Kaikan Gofu

Oga Aquarium GAO

Namahage Museum & Oga Shinzan Folklore Museum

Michi no Eki Oga Ogare

Ogata Village

Oga Futto Tourist Information Center

Oga Tourist Information Center



Depart from Akita Station

27.7km
About
40 mins
by car

Oga Tourist Information Center



20.8km
About
25 mins
by car



This information center is located on the gateway into the Oga Peninsula and has a giant 15m Namahage statue to greet you. It has a large carpark and a café area where you can take a break while looking out at Mt. Kanpu.

📍 207-219 Ikko, Funakoshi, Oga 🕒 9 : 00am-6 : 00pm
☎ 0185-35-5300

Namahage Museum & Oga Shinzan Folklore Museum



13.5km
About
20 mins
by car



This is a museum where Namahage masks from various districts around Oga are on display. You can experience a Namahage event in the adjoined Shinzan Folklore Museum that is a tradition passed down the generations in the Shinzan district.

📍 Mizukuisawa, Shinzan, Kitaura, Oga
🕒 9 : 00am-5 : 00pm
☎ 0187-55-1496

Nyudasaki



10.3km
About
13 mins
by car

Nyudasaki is a picturesque sunset spot located at 40 degrees north latitude. The impressive black and white striped lighthouse was selected in the top 50 lighthouses in Japan and there are a number of restaurants here to enjoy fresh seafood and local specialty dishes cooked on hot stones.



There are general toilets inside the shops and restaurants. Please use the public toilets here if you require a toilet for wheelchair users.



Nyudasaki Enchi Public Toilets

Oga Aquarium GAO



Via the west
coastal road
65km
About
1 hr 30 mins
by car



There are 10,000 living creatures from 400 different species on display here including many kinds of fish, penguins, seals and sea lions outside the main tank. There are around 2000 different species swimming in the main tank which contains around 800t of water. There is also the Hatahata display which is an area for breeding fish from Akita Prefecture.

📍 Shiohama, Toga, Oga
🕒 9 : 00am-5 : 00pm (※Winter period: 9:30am-4:30pm)
☎ 0185-32-2221

Arrive at Akita Station

Kakunodate Bukeyashiki Samurai Residences Walking Course



Tourism Center Stationfront Storehouse (Ekimaegura)

You can deposit your luggage/baggage at this tourism center in front of the Kakunodate Station for a fee. Deposit any large luggage/baggage here and then take a leisurely walk.



The appearance of the Bukeyashiki samurai residences retain the style of the times they were still lived in. The history and traditions are brought to life in the handicrafts and local dishes here.

Depart from Kakunodate Station

1.7km
5 mins
by car

✳ It takes about 15 mins on foot.
It's recommended if you wish to leisurely stroll through the streets of the town center.

Kakunodate Kaba Craft Densho-kan



200m
2 mins
on foot

This is a museum of traditional handicrafts made using the bark of mountain cherry trees. You can observe a demonstration of creating Kaba craft at close quarters and if you book in advance you can try making something yourself.

📍 10-1Shimocho, Omote, Kakunodate, Senboku
🕒 9 : 00am-5 : 00pm (Dec-Mar Close:4:30pm)
☎ 0187-54-1700



Bukeyashiki Ishiguro House

750m
5 mins
on foot

As the Bukeyashiki samurai residences were constructed long ago, there are several changes in level in the houses. If you enquire in advance, they will prepare an easy-to-use access slope for you at Ishiguro house.

📍 1Shimocho, Omote, Kakunodate, Senboku
🕒 9 : 00am-5 : 00pm
☎ 0187-55-1496

★ As the Bukeyashiki samurai residences were constructed long ago, there are several changes in level in the houses. If you enquire in advance, they will prepare an easy-to-use access slope for you at Ishiguro house.



Shokusai Machiyakan



2.3km
5 mins
by car

In the Agri Garden on the 1st floor, there are locally-grown, quality-assured vegetables and original local sweets, processed goods and freshly-made products using local ingredients and a wide variety of souvenirs on sale here.

📍 42-1Yokomachi, Kakunodate, Senboku
🕒 10 : 00am-5 : 00pm
(※The opening hours shorten in winter)
☎ 0120-86-4931



Ando Jozo Kitaura Honkan



3.2km
10 mins
by car

This shop that produces miso and soy sauce was established in 1853. Japanese-style pickled vegetables and local specialties are also sold here. You can leisurely shop and eat in the spacious surroundings. The soy sauce soft serve ice cream is also very popular here.

📍 42-1Yamazaki, Kumoshikari, Kakunodate, Senboku
🕒 9 : 00am-5 : 00pm
☎ 0187-53-2008

(※Contact the Ando Jozo Honten (main store) for enquiries)



Arrive at Kakunodate Station